

corgin

DUSTLAYER MOBILE DUST SUPPRESSION UNIT



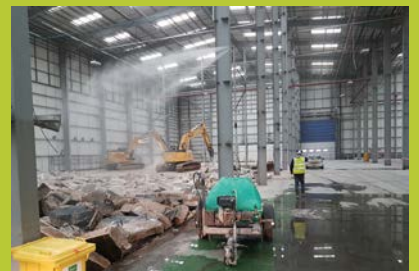
Self-contained, mobile dust suppression unit for controlling localised dust emissions on sites where power and water are not close by.

- Powerful atomising jet nozzles
- Integrated 1,100 litre water tank
- Folding, extendable mast
- Diesel engine-driven pump
- Mobile, trailer-mounted design
- Optional roadspray feature



DUSTLAYER SPECIFICATION

Model	DustLayer
Spray Head	
Atomisers	3x high-pressure atomising nozzles
Water consumption	Up to 10.2 L/min
Approx. throw range	10-12 m
Spray head rotation	360° manual, horizontal rotation
High-level mounting	Mounted on folding mast, extending to 4.5 m height
Low-level mounting	Optional extra: additional 3x nozzles mounted at rear fender level for roadway spraying
Tank	
Type	6-8 mm Polyethylene, baffled tank
Capacity	1,100 litres
Inlets	450 mm screw lid, centre 100 mm vented fill cap, with lockable access cover
Outlets	2" fast drain point
Trailer Chassis	
Description	Hot-dip galvanised steel chassis, highway specification with rear lights, mudguards and rubber suspension
Stabilisers	Adjustable jockey wheel; 1x adjustable support leg
Tow coupling	50 mm ball hitch (optional 40 mm ring hitch)
Brakes	Auto reverse braking; parking handbrake
Engine	
Type	Electric start
Fuel type and capacity	4.7 litres diesel
Approx running hours	8 hours
Pump	
Type	5.5 kW piston pump
Filtration	Pump inlet strainer
Ancillaries	Power washer lance, hose and holster
Dimensions and Weight	
Stowed (LxWxH)	3.9 m x 1.66 m x 1.72 m
Deployed (LxWxH)	3.5 m x 1.66 m x 4.5 m
Weight (unladen)	480 kg
Approvals	CE conformity to the relevant provisions of the Machinery Directive (06/42/EC), the Low Voltage Directive (06/95/EC), the EMC Directive (04/108/EC), and the Pressure Equipment Directive (97/23/EC), as amended.



E&OE. Corgin reserve the right to change specification details without prior notice.

Go to corgin.in/dlr-pds to download this product data sheet from our website.